



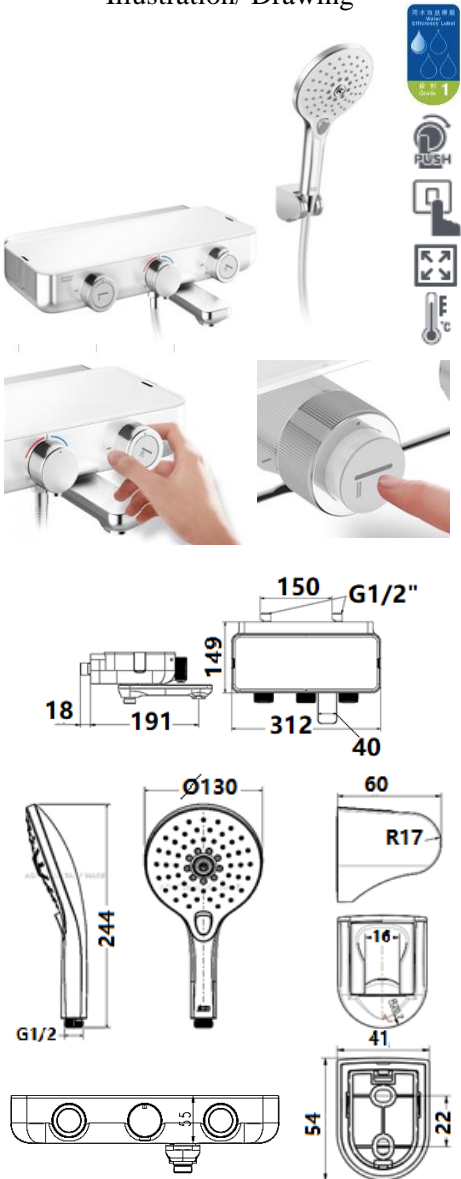
# Acme Sanitary Ware Co. Ltd.

1/F, Acme Building, 22-28 Nanking Street, Kowloon, Hong Kong  
Tel: 2388 7171 Fax: 2710 8012  
Email: acme@acmesanitary.com.hk  
Website: www.acmesanitary.com.hk

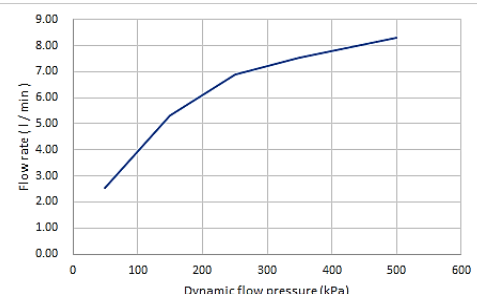
*American Standard*

PROJECT		REF		REV	ITEM CODE	
LOCATION		DATE			PAGE	

## SANITARY WARE SPECIFICATION SHEET

Item Descriptions	American Standard (PRC) "EasySET" Exposed chrome plated <b>push button</b> thermostatic bath and shower mixer with <b>swivel bath spout</b> to provide the space flexibility and ease of use ; built-in two <b>side hooks</b> ; 3 functions hand shower ; nominated flow rate <b>6.6 L/min</b> in WELS <b>Grade 1</b> ; Registration No. SB 17-0023					<div>Illustration/ Drawing</div> 											
Dimensions	L312 x W191 x H55 mm																
Model	FFAS4954-601500BC0																
Finish	Chrome Plated																
Manufacturer	American Standard (PRC)																
Supplier	Acme Sanitary Ware Co. Ltd Mr. Eric Wong/ Mr. Don Yuen																
Contact Tel/Fax	(852) 2388-7171 / (852) 2710-8012																
E-mail	acme@acmesanitary.com.hk																
Website	www.acmesanitary.com.hk																
<b>FEATURES</b>																	
German thermostatic cartridge																	
Anti-scald safestop button																	
Push button cartridge with flow rate adjustable from Japan, lifecycle≥300,000 times																	
Plastic body with cool touch design,no risk of scalding on the body																	
Designed with a shelf space for storage																	
Side Hook on both side,as a shower accessories and drain the water on the top of the surface																	
With swivel spout																	
<b>PUSH</b>																	
Imagine a rejuvenating shower experience as intuitive and simple as breathing. From the cascading water from the Rainshower to the invigorating Hand Shower, all activated individually with a simple push of a button.																	
<b>TURN</b>																	
Be in total control of both the temperature and volume of the water to create your own perfect shower. Choose a stronger flow of water to ease muscle tensions or a more sensuous flow for that relaxing spa-like pampering. All with an easy turn of the dial																	
<b>Hand Shower</b>																	
<table><tr><td>Dynamic flow pressure (kPa)</td><td>50</td><td>150</td><td>250</td><td>350</td><td>500</td></tr><tr><td>Flow rate (1/ min )</td><td>2.53</td><td>5.33</td><td>6.88</td><td>7.55</td><td>8.30</td></tr></table>						Dynamic flow pressure (kPa)	50	150	250	350	500	Flow rate (1/ min )	2.53	5.33	6.88	7.55	8.30
Dynamic flow pressure (kPa)	50	150	250	350	500												
Flow rate (1/ min )	2.53	5.33	6.88	7.55	8.30												

Flow rate (l/min)	0.00	1.00	2.00	3.00	4.00	5.00	6.00	7.00	8.00	9.00
Dynamic flow pressure (kPa)	0	100	200	300	400	500	600			



\* All information of the above is for the reference only. No prior notice is made if any changes.



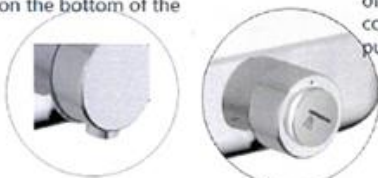
PROJECT		REF		REV	ITEM CODE	
LOCATION		DATE			PAGE	

## SANITARY WARE SPECIFICATION SHEET

### *American Standard*

#### SafeStop button

- Limits temperature selection at 38°C, depress button to select higher temperature
- Button is located on the bottom of the handle



#### Push & Turn

- Dial adjusts water volume easily and offers daily convenience at the push of a button

#### Side Hook

- Use to hang shower accessories and drain the water on the top of the surface
- Load up to 1.5 KG

#### Cool Surface (CoolShield)

- No risk of scalding on the body

#### Intuitive Graphics

- improved intuitive graphics on the button



#### SpaceCreate

- Designed with a shelf space to hold toiletries and accessories

#### ThermoComfort

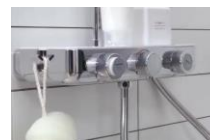
- Provides a constant and comfortable temperature.

#### Swivel Spout

- Space Saving so that minimize the space required

#### ThermoSafe

- Safety temperature control up to 49°C, with an auto shut-off function when cold water supply fails.



#### PUSH & TURN

Dial adjusts water volume easily and offers daily convenience at the push of a button.



#### EASYCLICK

An instinctive button for switching between spray modes.



#### SPACECREATE

Creates extra usable space in the bathroom.



#### THERMOCOMFORT

Provides a constant and comfortable temperature.



#### SWIVEL 360°

360° spout provides space flexibility and ease of use.

Note:



**Acme Sanitary Ware Co. Ltd.**

1/F, Acme Building, 22-28 Nanking Street, Kowloon, Hong Kong

Tel: 2388 7171 Fax: 2710 8012

Email: acme@acmesanitary.com.hk

Website: www.acmesanitary.com.hk

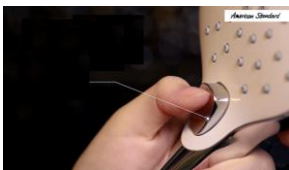
*American Standard*

PROJECT		REF		REV	ITEM CODE	
LOCATION		DATE			PAGE	

## SANITARY WARE SPECIFICATION SHEET

### Hand Shower

Dynamic flow pressure (kPa)	50	150	250	350	500
Flow rate (l/min)	2.53	5.33	6.88	7.55	8.30



MODE  
**1**

TRANQUIL RAIN



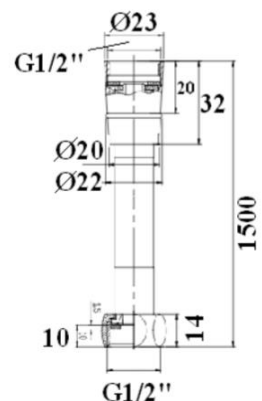
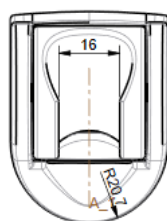
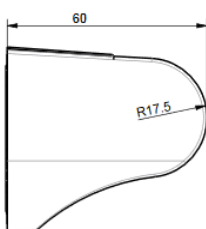
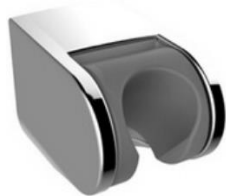
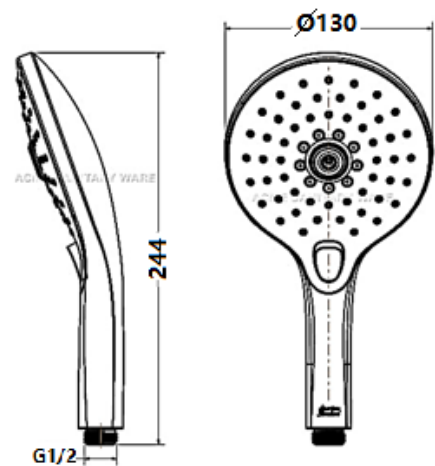
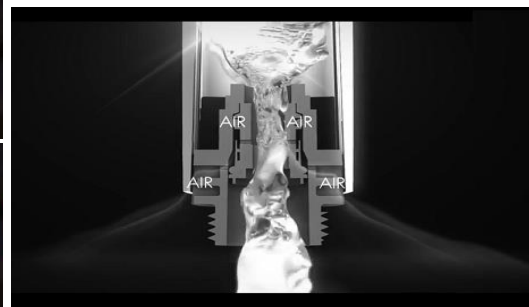
MODE  
**2**

JET RAIN



MODE  
**3**

THERAPY RAIN



<https://www.youtube.com/watch?v=SLncQdPEw6s>

\* All information of the above is for the reference only. No prior notice is made if any changes.



註冊號碼 (Registration No.): SB 17-0023




自願參與用水效益標籤計劃 - 沐浴花灑  
Voluntary Water Efficiency Labelling Scheme - Showers for Bathing



茲證明  
This is to certify that

將下列花灑在本計劃內註冊：  
has registered the following shower under this scheme :

牌 子 / Brand	:	American Standard
型 號 / Model	:	FFAS9H11-000500BC0
原產地 / Country or Region Origin	:	China

在用水效益標籤上展示的標誌 <i>Symbolic Presentation on the Water Efficiency Label</i>	:	 滴水點 <i>Water droplet(s)</i>
用水效益級別 <i>Water Efficiency Grade</i>	:	1
耗水量 <i>Water Consumption</i>	:	6.6 公升/分鐘 <i>litres/minute</i>

簽發日期:  
Date of Issue: 28 August 2017



水務署  
Water Supplies Department



水務署署長(周世威代行)  
for Director of Water Supplies



Department

入境事務大樓 48 樓  
48/F, Lower, 7 Gloucester Road, Wan Chai, Hong Kong

本署檔號 : (4) in WSD 3321/2020 T/J(655/2020)  
Our ref.  
來函檔號 :  
Your ref.

電話 :  
Tel.  
傳真 : 2824 0578  
Fax.

4 September 2020

**Approval of "AMERICAN STANDARD" Thermostatic Mixer  
(General Acceptance No. C20200752)**

Your letters ref. WRC/2232 and C-WSD/0623 dated 29 May 2020 and 11 August 2020 respectively refer.

Having considered the test report ref. J24047r1 issued on 23 July 2020 by Nutek Systems (HK) Ltd., this Authority accepts that the fitting described below complies with, and its use when correctly installed does not contravene, the Waterworks Ordinance and Regulations.

**Name of Manufacturer:** Jiangmen LIXIL AS Sanitary Fitting Manufacturing Co Ltd  
**Country of Origin:** the Mainland of China  
**Brand:** American Standard  
**Details of Fitting:** 1/2" Thermostatic bath and shower mixer  
**Model:** FFAS4954-601500BC0  
**Body Markings:** *American Standard*  
**Expiry Date:** 5 April 2025



This Authority hereby permits the use of the above fitting in fresh water plumbing systems subject to full adherence to Waterworks installation requirements. In particular, you are required to draw your customers' attention to the following requirement-

"The cold water supply to the fitting shall be drawn from the same source that supplies the hot water apparatus so as to provide a balanced pressure and to obviate the risk of scalding in the event of a restriction or failure in the water supply." AND

"The shower head or handspray should not be placed in submerged conditions and should be securely fixed to the original position after use."

A condition of this acceptance is that the fitting to be installed shall be replicas of the sample as certified by the testing agent mentioned above and without modifications. This acceptance may be withdrawn at any time if the standard of the fitting installed fails to meet that of the approved sample or if the fitting is found to be unsuitable for use in fresh water plumbing systems.

This acceptance is only applicable to the main body of the fitting, unless otherwise specified.

For the use of the fitting in any project, the General Acceptance Number of this letter must be quoted as a means of identification of acceptance of the fitting by this Authority.

Should you have any enquiries, please contact our Engineer Mr. Terry KUNG at tel. no. 3583 4086.

Yours faithfully,



(CHAN Chung-kun)

for Director of Water Supplies

Encl.

c.c.     WSD 3321/1/82    ] - without catalogue  
            ME/MC            ] - with soft copy only